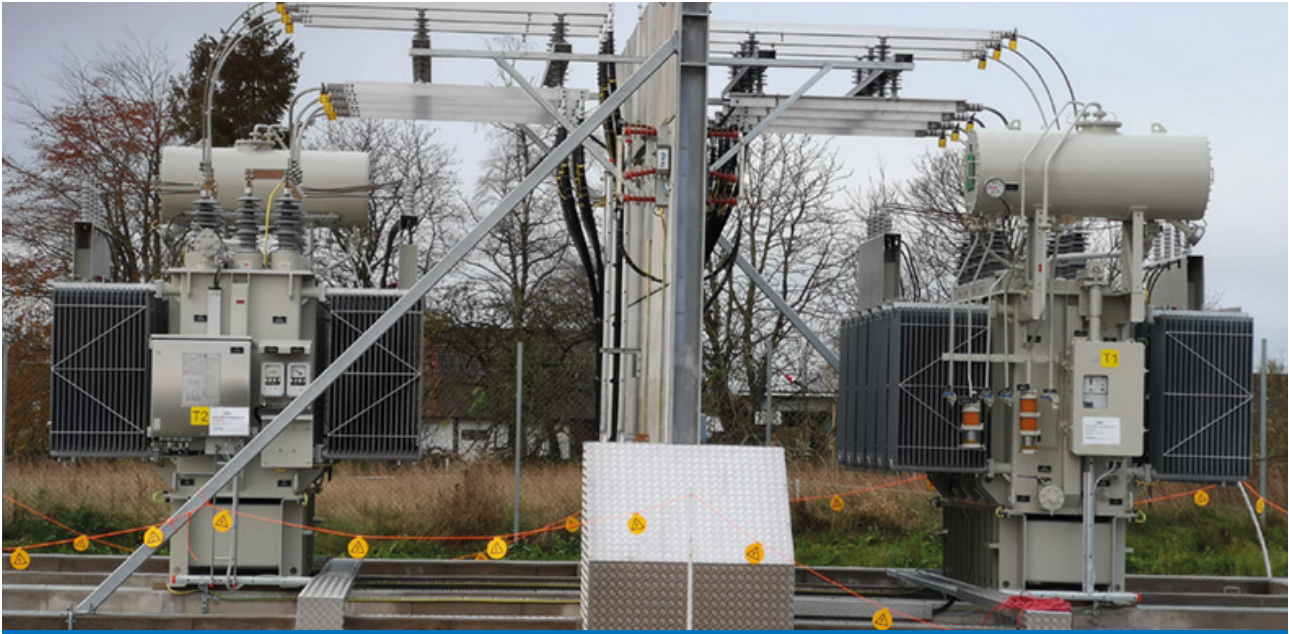


Primary substations

Southern Sweden, E.ON



Extensive upgrading of five different 20-10 kV stations in south-east Sweden for E.ON Energi.

As part of an earlier framework agreement and participation in other companies' total contracts, Harju Elektek received an order from E.ON Energi relating to large substations. The company was contracted to upgrade and replace existing installations in five different 20–10 kV stations in south-east Sweden.

Harju Elektek accepted total responsibility under its own management for two of the five stations, Önnköping and Tåstarp. For the other three, Harju Elektek's production facility in Grytgöl delivered preassembled stations with plinth foundations. Onsite testing was carried out in collaboration with Omexon.

ABB supplied UniGear MSP 20–10 kV to Grytgöl via E.ON's framework agreement with ABB. The equipment was installed and tested, partly by connecting it directly to E.ON's own SCADA system, Eldorado. The testing was performed in Grytgöl before the complete stations were transported to the site for final installation.

Technical description

The scope of the project was as follows:

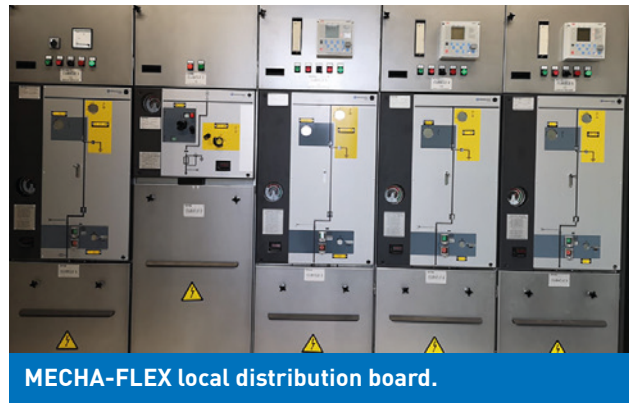
- Rebuilding and demolition of existing 24 kV outdoor switchgear
- Demolition of existing 12 kV indoor switchgear, battery system, SCADA system, etc.
- Construction of new transformer foundation and frame for 24-12 kV cable connection
- GRYTEK CombiFLEX technical shelters, 5 pcs, indoor type, for 24 kV medium voltage switchgear
- Zero point resistance
- ELCOVER low voltage cabinet for DC
- MECHA-FLEX local distribution board with metering
- ELCOVER SEBvision SCADA system, Eldorado
- Cabling, 24–12 kV, with signal cabling
- Site preparation
- Design, engineering and service support
- Checking, testing and commissioning



E.ON Tåstarp, a new 20–10 kV station with CombiFLEX.



ELCOVER control cabinet.



MECHA-FLEX local distribution board.