

# Electricity for pumps that ensure availability of district heating supply

## Luleå Energi, Luleå



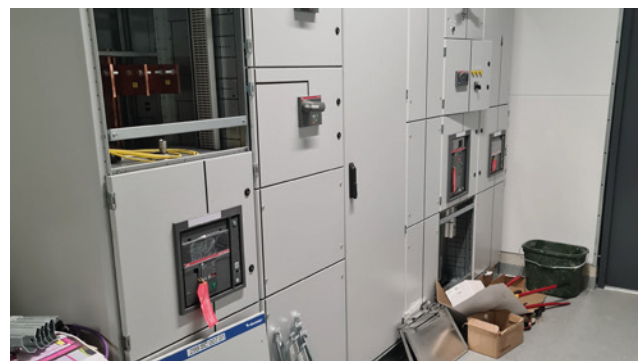
District heating is produced in the Lulekraft CHP plant.

**Luleå Energi offers various types of energy services. In addition to owning and managing the electricity network in Luleå, the company produces and distributes district heating and cooling. The district heating is mainly produced in a CHP plant co-owned by SSAB and Luleå Energi using surplus gas from the steel manufacturing process at SSAB in Luleå.**

To ensure a nonstop supply of district heating to the 30 000 customers in the catchment area, there is back-up in the form of a storage unit into which heated water is pumped. This is referred to locally as the "Thermos"!

The pumps which pump in the heated water for storage, as well as the lighting, heating and ventilation in the facility are fed with 690 V and 400 V respectively via three low voltage switchgears.

Harju Elektek has supplied the "Thermos" with cassette switchgear which will go into operation in spring 2022.



Elcover switchgear being installed at the "Thermos" in Luleå.